

MIMY

RACK & GEAR



SUPER SONIC HOUSE, Plot No. C-10/5-6, Soma Kanji Estate-2, (SK-2),
Near Sosyo Circle, Opp. Sanidev Temple, Udhna Magdalla Road,
Surat (Gujarat) India - 395007 | www.supersonicgroup.in
For Enquiry Contact : +91 261 2634263, 95129 51510
e-mail : supersonichouse07@hotmail.com

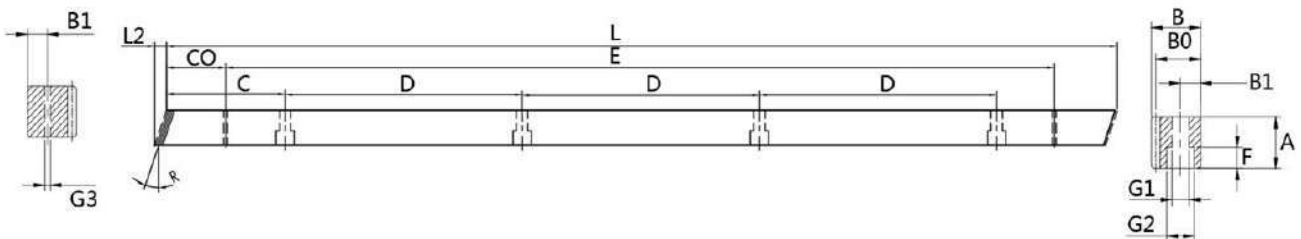
 A	Helical Gear Rack 斜齿条 03
 B	Straight Gear Rack 直齿条 04
 C	Gear 齿轮 05

Contents

目录

Description(参数)

Precision grade 精度等级	DIN 8e27	Pressure Angel 压力角	20 degree
Material 材质	S45C	Angel 右旋角	19° 31' 42'
Gear Teeth 齿形	Helical 斜齿	Treatment of Teeth 齿面处理	Milled 精铣
Hardness 硬度处理	18-20 degree/ 高频 treatment;45-50 degree		



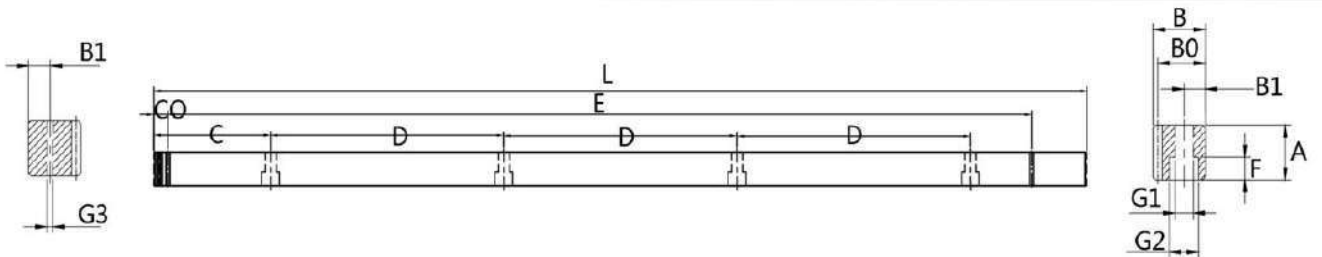
单位/Dimension : mm

Code	Module	L	L2	Tooth No.	A	B	B0	C	D	Hole No.	B1	G1	G2	F	CO	E	G3
LX015-05	1	500	5.3	150	15	15	14	62.5	125	4	6	4.5	8	5	31.7	5	5.7
LX015-10	1	1000	5.3	300	15	15	14	62.5	125	8	6	4.5	8	5	31.7	5	5.7
LX017-05	1.5	500	6.0	100	17	17	15.5	62.5	125	4	7	6	9.5	7	31.7	7	5.7
LX017-10	1.5	1000	6.0	200	17	17	15.5	62.5	125	8	7	6	9.5	7	31.7	7	5.7
LX024-05	2	500	8.5	75	24	24	22	62.5	125	4	8	7	11	7	31.7	7	5.7
LX024-10	2	1000	8.5	150	24	24	22	62.5	125	8	8	7	11	7	31.7	7	5.7
LX029-05	3	500	10.3	50	29	29	26	62.5	125	4	9	10	15	9	35.0	9	7.7
LX029-10	3	1000	10.3	100	29	29	26	62.5	125	8	9	10	15	9	35.0	9	7.7
LX039-05	4	506.67	13.8	38	39	39	35	62.5	125	4	12	10	15	9	33.3	9	7.7
LX039-10	4	1000	13.8	75	39	39	35	62.5	125	8	12	10	15	9	33.3	9	7.7
LX049-05	5	500	17.4	30	49	39	34	62.5	125	4	12	14	20	13	37.5	13	11.7
LX049-10	5	1000	17.4	60	49	39	34	62.5	125	8	12	14	20	13	37.5	13	11.7
LX059-05	6	500	20.9	25	59	49	43	62.5	125	4	16	18	26	17	37.5	17	15.7
LX059-10	6	1000	20.9	50	59	49	43	62.5	125	8	16	18	26	17	37.5	17	15.7
LX079-05	8	480	28.0	18	79	79	71	60.0	120	4	25	22	33	21	120.0	21	19.7
LX079-10	8	960	28.0	36	79	79	71	60.0	120	8	25	22	33	21	120.0	21	19.7

Straight Gear Rack 直齿条

Description(参数)

Precision grade 精度等级	DIN 8e27	Pressure Angel 压力角	20 degree
Material 材质	S45C		
Gear Teeth 齿形	Straight 直齿	Treatment of Teeth 齿面处理	Milled 精铣
Hardness 硬度处理	18-20 degree/ 高频 treatment;45-50 degree		

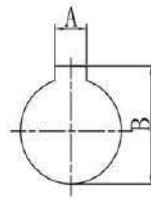
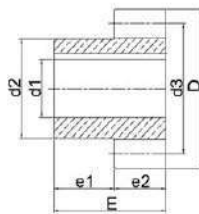


单位/Dimension : mm

Code	Module	L	Tooth No.	A	B	BO	C	D	Hole No.	B1	G1	G2	F	CO	E	G3
FS015-05	1	499.51	159	15	15	14	62.44	124.88	4	6	4.5	7.5	5	29.0	441.5	5.7
FS015-10	1	999.03	318	15	15	14	62.44	124.88	8	6	4.5	0.5	5	29.0	941.0	5.7
FS017-05	1.5	499.51	106	17	17	15.5	62.44	124.88	4	7	6	9.5	7	29.0	441.5	5.7
FS017-10	1.5	999.03	212	17	17	15.5	62.44	124.88	8	7	6	9.5	7	29.0	941.0	5.7
FS024-05	2	502.65	80	24	24	22	62.88	125.66	4	8	7	11	7	31.3	440.1	5.7
FS024-10	2	1005.31	160	24	24	22	62.88	125.66	8	8	7	11	7	31.3	942.7	5.7
FS029-05	3	508.94	54	29	29	26	63.62	127.23	4	9	10	15	9	34.4	440.1	7.7
FS029-10	3	1017.88	108	29	29	26	63.62	127.23	8	9	10	15	9	34.4	942.7	7.7
FS039-05	4	502.65	40	39	39	35	62.83	125.66	4	12	10	15	9	37.5	427.7	7.7
FS039-10	4	1005.31	80	39	39	35	62.83	125.66	8	12	10	15	9	37.5	930.3	7.7
FS049-05	5	502.65	32	49	39	34	62.83	125.66	4	12	14	20	13	30.1	442.4	11.7
FS049-10	5	1005.31	64	49	39	34	62.83	125.66	8	12	14	20	13	30.1	945.0	11.7
FS059-05	6	508.94	27	59	49	43	63.62	127.23	4	16	18	26	17	31.4	446.1	15.7
FS059-10	6	1017.88	54	59	49	43	63.62	127.23	8	16	18	26	17	31.4	955.0	15.7
FS079-05	8	502.65	20	79	79	71	62.83	125.66	4	25	22	33	21	26.6	449.5	19.7
FS079-10	8	1005.31	40	79	79	71	62.83	125.66	8	25	22	33	21	26.6	952	19.7

Description(参数)

Precision grade 精度等级	DIN 8e27	Pressure Angel 压力角	20 degree
Material 材质	S45C	Treatment of Teeth 齿面处理	Milled 精铣
Gear Teeth 齿形	Straight 直齿	Hardness 硬度处理	55-60 degree



单位/Dimension : mm

Model 模数	Tooth no. 齿数	d1	D	d2	d3	E	e1	e2	A	B
1.5	25	16	40.5	30	37.5	46	26	20	5	18.3
1.5	40	22	63	36	60	48	28	20	6	24.8
2	25	16	54	30	50	54	26	28	5	18.3
2	26	30	60	50	56	60	32	28	8	33.3
2	32	16	68	30	64	54	26	28	6	24.8
2	36	40	76	62	72	65	37	28	12	43.3
2	40	32	64	55	80	65	37	28	10	35.5
2	50	45	104	68	100	65	37	28	14	48.8
2.5	22	22	60	36	55	56	28	28	6	24.8
2.5	28	32	75	55	70	65	37	28	10	35.3
2.5	36	40	85	62	90	65	37	28	12	43.3
3	22	22	72	36	66	56	28	28	6	24.8
3	25	40	81	62	75	65	37	28	12	43.3
3	26	22	90	36	84	56	26	28	6	24.8
3	32	40	102	62	96	65	37	28	12	43.3
3	36	45	114	68	108	65	37	28	14	48.8
4	20	32	88	55	80	75	35	40	10	35.5
4	22	45	96	68	88	75	35	40	14	48.8
4	25	32	108	55	100	75	35	40	10	38.3
4	28	45	120	68	112	75	35	40	14	48.8
4	32	55	136	80	128	80	40	40	16	59.3
4	40	75	166	110	160	100	60	40	20	79.9
5	21	45	115	68	105	85	35	50	14	48.8
5	25	45	135	68	125	85	35	50	14	48.8
6	21	55	138	80	126	100	40	60	16	59.3
6	25	75	162	110	150	120	60	60	20	79.9